

# CLPPP Data Update

---

DAN ALBRIGHT, CLPPP DEPARTMENTAL SPECIALIST



# Topics for today

---

- Annual Report updates
- Quarterly Data Reports
- Cap to Venous Follow-up testing

# 2017 Annual Report

---

- Addition of more data categories and deeper analysis
- Full report to be published online later this summer
- Data tables available to Local Health Departments this week

# Quarterly Data Reports

---

- Currently being developed
- Goal to provide LHDs with more current data
- Working with Data Referent Group
- Deduplicated by month, and by year

# Quarterly Data Reports (cont)

---

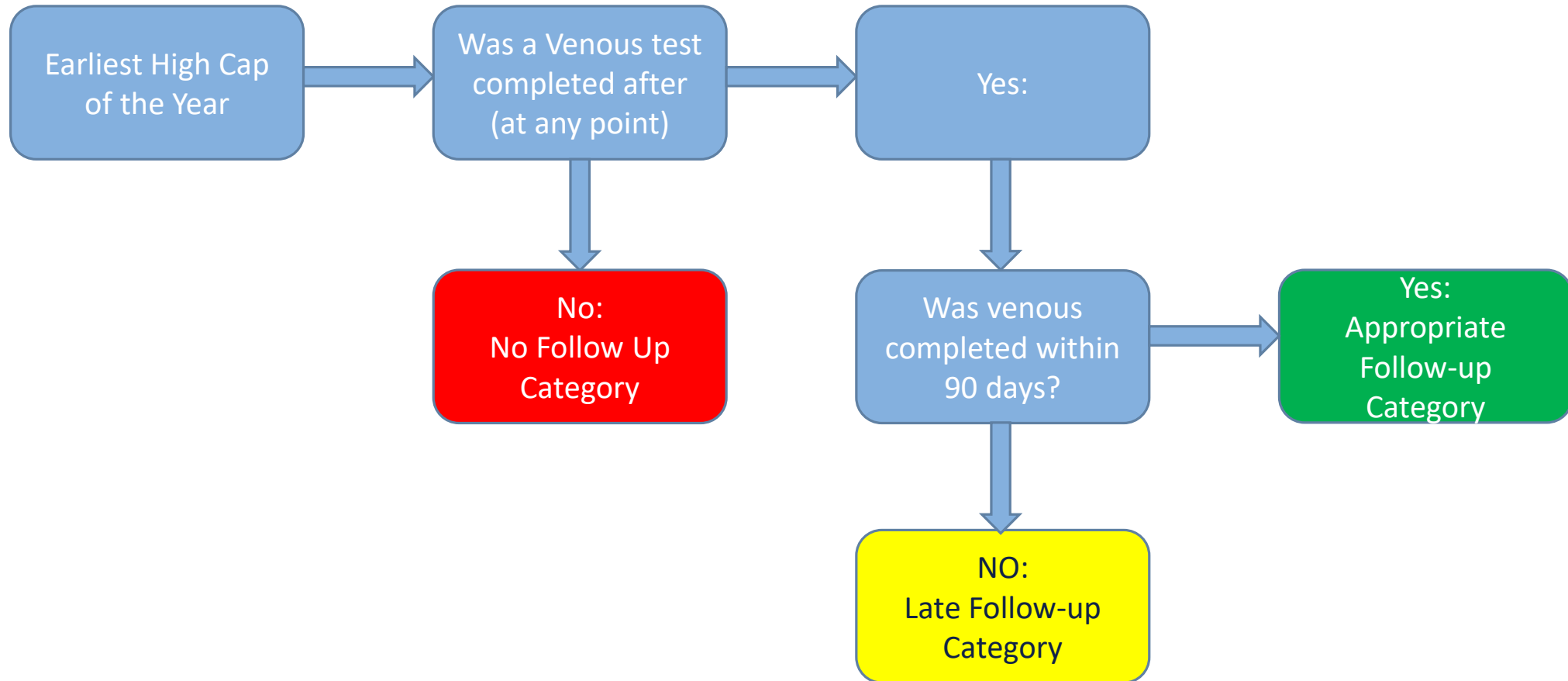
- Monthly Break Down
  - Aggregate counts deduplicated by month
    - Number Tested, number/percent Elevated
    - Number/Percent Capillary Elevated
    - Number/Percent Venous Elevated

# Quarterly Data Reports (cont)

---

- Annual Break Down
  - Deduplicated by year
  - Same categories as the CLPPP Annual report
    - Number and Percent; tested, EBL, Cap EBL, Ven EBL
    - Venous categories; 5-9, 10-14, 15-19, 20-44, 45+
- Years 2014-present
- Capillary-Venous follow up testing

# Capillary to Venous Follow-Up Testing Logic



# Data Referent Group

---

- Planning for August 2019
- Topics include
  - Quarterly Reports
  - Annual Report
  - New matching algorithms



# Questions

---

- Dan Albright
- [albrightd@Michigan.gov](mailto:albrightd@Michigan.gov)
- 517-284-4791