



MDHHS – HEALTHY HOMES SECTION

UNDERSTANDING OUR SECTION



MDHHS complies with applicable Federal civil rights laws and does not discriminate on the basis of race, color, national origin, age, disability, or sex.

DATE Updated: 05/14/2018

INTRODUCTION

PURPOSE OF GUIDE

The purpose of this guide is to provide new employees with the knowledge needed to perform their job to the best of their abilities while working in the Healthy Homes Section (HHS) and becoming part of our team.

LEAD PAINT AND POTENTIAL EXPOSURE

LEAD-BASED PAINT

Lead is a highly toxic metal.

When we say **paint** it includes varnishes, lacquers, stains, enamels, glazes, primers, and coatings. **Lead-based paint** is a paint that has lead in it.

It was commonly used in household paint in homes built before **1978**. In 1978, the federal government banned the use of lead-based paint in homes (for consumers). *The older the home, the more likely it is to have lead-based paint.*

Older Homes are More Likely to Contain Lead-Based Paint



Lead is used in paint to:



Brighten the color



Speed up drying time



Reduce corrosion (weathering / wear and tear)

LEAD-BASED PAINT EXPOSURE

Exposure to lead happens during the **application** and **removal** of lead-based paint.

Lead-based paint breaks down over time into:



Paint chips

**Chips include paint that is peeling, chipping, chalking or cracked.*



Dust

Dust is created when lead paint is scraped, dry sanded, heated or burned, or when painted surfaces rub together (opening / closing windows and doors). **Dust is the most common source of lead exposure.*

Lead chips and dust settle on surfaces and objects that people touch.

Settled lead dust can re-enter the air when people:



Vacuum



Sweep



When they or their pet walk through it

Dust from lead-based paint can contaminate the soil.

This can be a source of exposure when children play on the ground, or when people bring soil into the house on their shoes.




LEAD POISONING

There is no safe level of lead exposure.

Lead poisoning occurs when lead enters into the body through either: **inhalation** (breathing in) or **ingestion** (eating).

The health impact: Lead is a multi-system toxicant, causing:

- | | | |
|--|---|---|
|  <i>Brain and nervous system damage</i> |  <i>Hearing problems</i> |  <i>Digestive problems</i> |
|  <i>Decreased IQ</i> |  <i>Slow or reduced growth</i> |  <i>Kidney damage</i> |
|  <i>Learning difficulties</i> |  <i>Muscle or joint pain</i> |  <i>Anemia</i> |
|  <i>Speech, language, and behavior problems</i> |  <i>Reproductive problems (adult)</i> |  <i>High blood pressure</i> |

CHILDREN ARE ESPECIALLY VULNERABLE

They have greater exposure to lead through:

- | | |
|---|--|
|  <u>Frequent hand-to-mouth activity / mouthing objects.</u> |  <u>Digesting 4-5 times more lead</u> from the gut than adults. |
|  <u>Consuming more food and drink, and breathing more air per kilogram of body weight</u> than adults. |  <u>Nutritional deficiencies</u>, such as an iron deficiency (which increases bioavailability of lead – meaning it makes lead more available to enter the body). |

MDHHS – HEALTHY HOMES SECTION

THERE ARE THREE UNITS WITHIN THE HEALTHY HOMES SECTION:

- **THE LEAD SAFE HOME PROGRAM (LSHP) UNIT**
- **COMMUNITY DEVELOPMENT (CD) UNIT**
- **CERTIFICATION, TRAINING & WORKFORCE DEVELOPMENT (CEWD) UNIT**

LEAD SAFE HOME PROGRAM

WHAT DOES THE LEAD SAFE HOME PROGRAM DO?

- The LSHP performs lead inspections on residential properties that were built prior to 1978 and are occupied by a child under the age of six years old, with an elevated blood lead level, or Medicaid-enrolled child under 19 years of age in some areas.
- The inspections are performed by our field staff, which we refer to as Regional Field Consultants (RFCs). Once the inspection is completed, the RFC completes a report on the findings and determines if there are any lead hazards in the home.
- Lead hazards identified during the inspection are addressed by our certified Lead Abatement Contractors. Once the lead hazard control work is completed by the contractor, our RFC returns for dust clearance sampling to ensure the home is lead safe for the family to reoccupy.

WHO DO WE SERVE?

- The LSHP serves families with children under the age of six years old, pregnant females, homeowners, landlords, and other residential child occupied facilities (i.e. daycares, etc.). Families with children under 19 years of age enrolled in Medicaid are eligible for services in some areas.

LSHP STAFF:

- **Unit Manager** – Oversees the program, program staff and contractors.
- **LSHP Unit Assistant** – Performs administrative tasks to assist with unit organization, assists callers with general program questions, and supports the unit manager and other staff as needed.
- **Intake Coordinators** – Process applications for LSHP to determine the family's eligibility for services. Schedules inspections and contractor walk-throughs for the RFC's.
- **Regional Field Consultants (RFC)** – (work in the field) perform lead inspections of eligible residences, provide contractor oversight during the abatement process and ensure the homes are lead safe for re-occupancy.
- **Family Services Coordinator** – Assists RFC's and provides social services to the families, if needed. Delivers family case management and schedules relocation of families during lead abatement.
- **Procurement Coordinator** – Receives bids from abatement contractors, awards projects to most qualified contractor, processes invoices, and processes project change orders as needed.
- **Outreach Analyst** – Performs outreach for LSHP and manages contracts for private firms providing inspection services for LSHP.

MISSION

To improve the health and wellbeing of Michigan citizens by promoting safe and healthy home environments through comprehensive home-based intervention programs, lead certification and regulations, public education and outreach, and statewide partnerships.

WHAT WE DO

We provide lead inspections, environmental investigations, hazard remediation and clearance, as well as promote safe and healthy environments through public health practice.

CERTIFICATION, ENFORCEMENT & WORKFORCE DEVELOPMENT

WHAT DOES THE CERTIFICATION, TRAINING & WORKFORCE DEVELOPMENT UNIT DO?

- **Certification** - Provides certification to perform lead abatement work, lead inspections and EBL investigations. The certification staff administers the state exam for lead professionals.
- **Training** – Provides technical support to certified lead trainers teaching classes required for State of Michigan lead certification. Staff audits trainers during training classes to ensure complete and accurate training. Also, issues accreditation to individuals seeking training certification.
- **Workforce Development** – Develops and maintains workforce development operations for lead professionals and contractors. Works to establish and foster partnerships within communities for building lead workforce capacity.
- **Enforcement** – Monitors certified contractors and professionals for compliance with Federal and State regulations. Provides training and educational assistance to certified professionals.

WHO DO WE SERVE?

- Lead professionals, lead contractors, lead trainers and Michigan residents.

CEWD STAFF:

- **Unit Manager** – Oversees the program and program staff.
- **Enforcement Lead Worker** – Oversees enforcement operations and staff.
- **Enforcement Officer** – Regulates lead activities throughout the State by performing scheduled or random site audits.
- **Training & Compliance Officer** – Accredited training programs and audits training providers.
- **Certification Assistant** – Reviews and processes applications for individuals applying to become lead certified and administers the state exam for lead professionals.
- **Certification & Training Specialist** – Performs professional reviews for lead abatement contractors and professionals to provide educational guidance, and trains newly hired RFC's for the LSHP in the field.

MISSION

To improve the health and wellbeing of Michigan citizens by promoting safe and healthy home environments through comprehensive home-based intervention programs, lead certification and regulations, public education and outreach, and statewide partnerships.

WHAT WE DO

We provide certification and training to individuals and contractors, regulate the lead workers state wide and develop and maintain workforce development for lead professionals.

COMMUNITY DEVELOPMENT UNIT

WHAT DOES THE COMMUNITY DEVELOPMENT UNIT DO?

- Issues Medicaid funded lead hazard control grants to eligible communities throughout the State of Michigan through a competitive application process.
- Provides technical assistance and monitoring to grantees regarding lead hazard control, building community lead hazard awareness through education and outreach, and lead contractor and professional workforce development.

WHO DO WE SERVE?

- Local communities throughout the State of Michigan.

CD STAFF:

- **Unit Manager** – Oversees the program, program staff and manages grantee performance. Acts as direct contact to Centers for Medicaid and Medicare Services and Michigan Medicaid regarding lead hazard control.
- **Unit Secretary**– Performs administrative tasks to assist with unit organization, assists callers with general program questions, and supports the unit manager and other staff as needed.
- **Program Coordinators** – Monitors performance of Medicaid grantees and provides technical assistance regarding lead hazard control.
- **Health Educator** – Develops and maintains education and outreach materials for all units. Provides internal and external communication technical assistance for audience appropriateness and understanding
- **Senior Project Manager** – Develop and maintain the Medicaid Lead Hazard Control Community Development Program Request for Proposal. Directing the development, implementation and maintenance of the Section's database.

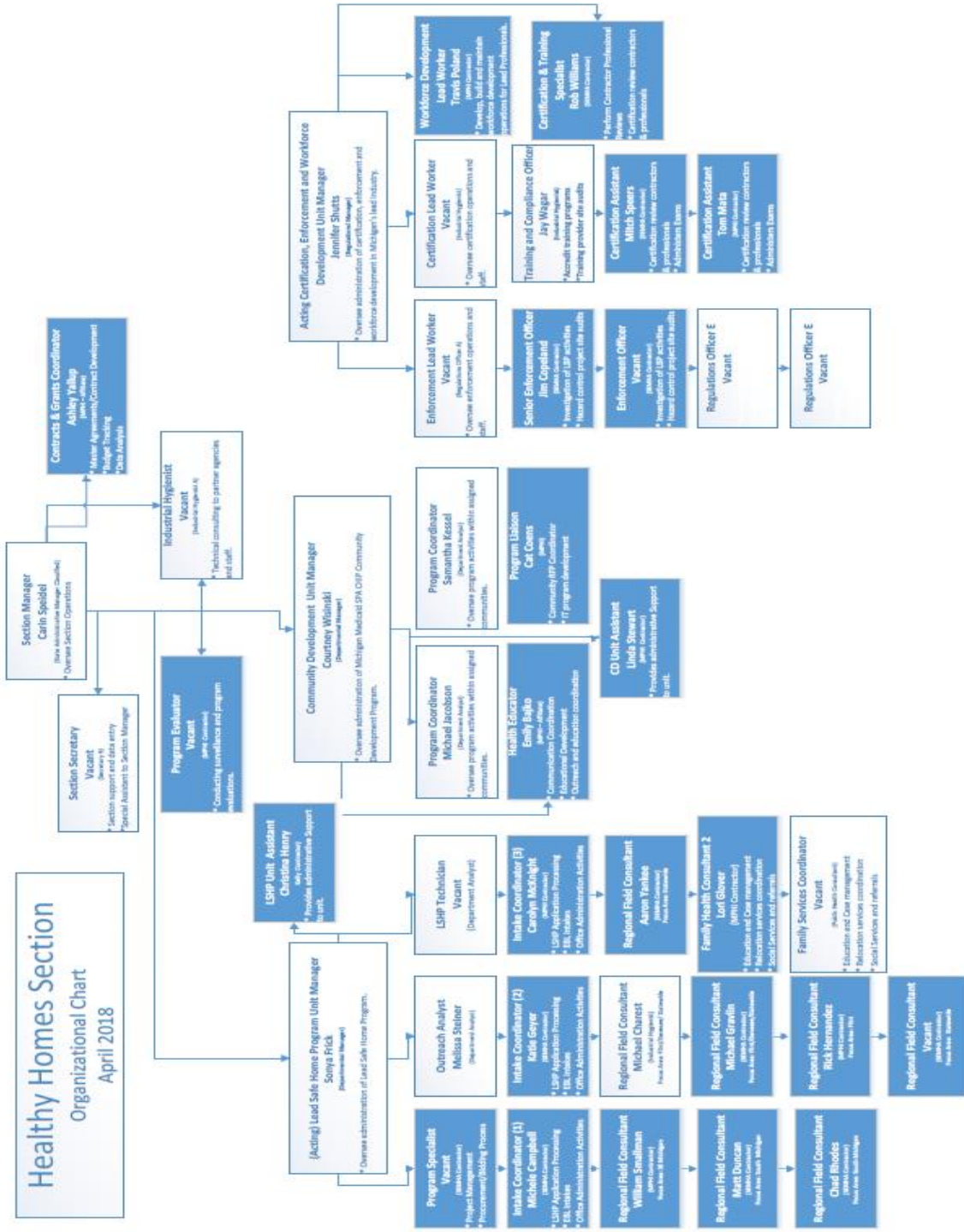
MISSION

To improve the health and wellbeing of Michigan citizens by promoting safe and healthy home environments through comprehensive home-based intervention programs, lead certification and regulations, public education and outreach, and statewide partnerships.

WHAT WE DO

Provide Medicaid funded grants to communities to administer lead programs throughout the State of Michigan.

Healthy Homes Section Organizational Chart April 2018



Blue = Contract Employee
White = State Employee